

PHOENICIA QUARRIES

elev. ± 1100'

8/2/77 137-1



① Ulmus glabra #839 - base of dump pile
 Bark not as rough as Amer Elm - like
Atropa more. Form not vase shaped.
 Bark (full) not white-layered. Lvs
 very scabrous both surfaces.
 Ontalys dump piles:
Parthenocissus, Geranium robertianum,
Rubus hispidus

95 year ASH stump = 11" ← Tree #11
 How much fill removed above quarry
 before quarrying began?

#836 At (A): Gravel pit used for
 fill of Route 28 new in early
 1960s. 10 to 20' of fill
 removed. Ravine draining
 (B) has cut down to 8'.

Roots of SUG, NEM, B, OAK
 reach depths of 4' or 5' max.
 Abundant oak seedlings.
 Till is mostly blue sandstone,
 10% red shale,
 several % conglomerate,
 1% gneiss & quartzite.

No stratification. Top of
 (A) is about 60' above Route 28

At (B): Top of B is about
 200' above Rt 28. Slope
 of land is 35° on till 20
 to 25' thick or least removed.
 12" SHAG at rim.

At (C): Quarry about 250' #838
 above Rt 28. Talus
 dump piles. 40' head wall
 rock face. Till around
 quarry 1 to 2' (3' max)
 thick. In Quarry is
 BAS-CARP (well drained!)
 - ASH-BUTTERNUT-ELM-
 BB-SUG-MO-VIB ACER-NEM.

BB & NEM are
 rooting in shale
 "underhang" of
 quarry along with
Asplenium Trichomanes

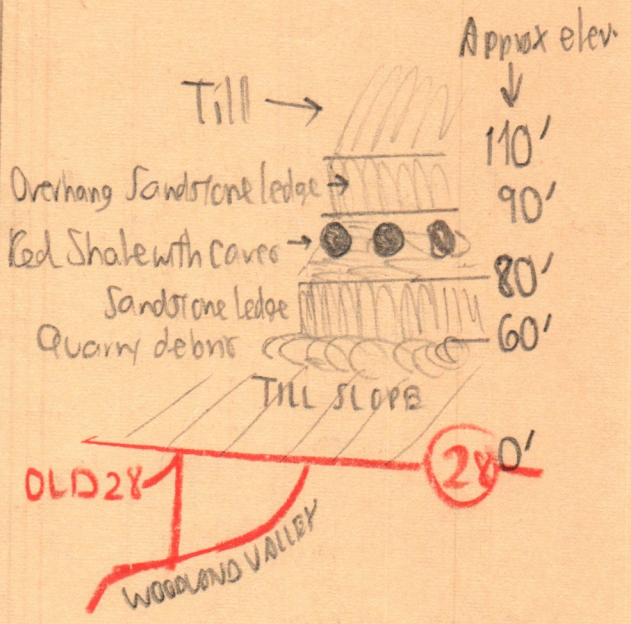
(over)

(E) South of main quarry, 50ft. edge has not been worked. Talus below it >10' thick. No step below ledge marked ^{Esopus} (*). Just steep fill surface down to Creek.

137-2

Above Junction of Woodland Valley Rd + (28): Lookmo N. 8/5/77

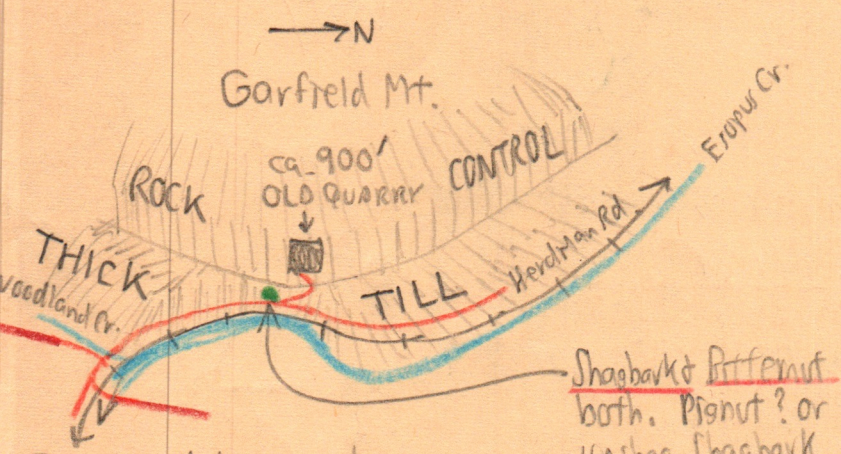
(F) 30' of till, not scratched, although some cobbles rounded. Fragipan in fresh vertical unweathered cuts. Mudcracks at basal pools. Rorts only 3 to 4' deep. Much too coarse a deposit for outwash, or, if outwash, then extremely poorly sorted.



Here, bedrock lies within 75' of the Esopus, while 1/2 mi upstream, it is more than 200' up.

(G) Route 28 is in a cut >20 to 30 ft deep in till.

View of SW shore of Esopus Creek above Woodland Creek: 8/5/77



NO OUTWASH OR LAKE EVIDENCE IN ESOPUS VALLEY.
 COULD RICH'S WAGON WHEEL GAP OUTLET BE ERRONEOUS?
 ACCORDING TO E.G. WEST & A. PRESADON, water wells penetrate bedrock at 100 ft in both places.

Quarry wall bare at least 75' above Creek. Bedrock does not even approach Herdtman Rd, which is about 20 ft above Creek.

The diversity on Herdtman Rd: 8/5/77

- | | | |
|--|--|---|
| good forest S of Quarry entrance, E roadside | <u>PR, RR, YB</u>
BC, PIN
ASH, BASS, EUM
<u>OST (CARP)</u>
<u>ROCK</u>
STAGHORN, SUMAC
HEM | SUG-B
SHAG
<u>BIFIDANUT</u>
HAM
VA
<u>CHESNUT</u>
ASPEN |
|--|--|---|